

1 Agency Referrals, Admissions and Discharges, Jan 1 2006 – March 31 2006

This summarizes referrals processed by Contact Brant for Woodview and admissions and discharges of cases within Woodview, between January 1 2006 and March 31, 2006 (Q1 06). For example, there were 124 referrals s to Woodview during the quarter.

	Woodview	
# of cases Waiting before period	105	
# of cases Active before period	297	
# of cases Referred In period	124	- 124 referrals, Jan - March 2006
# of cases Admitted In period	156	- 156 admissions
# of cases Discharged In period	35	- 35 discharges
# cases Non-materialized In period	20	- 20 cases closed without being seen
# of cases Waiting After period	55	- 55 cases waiting for service as of Apr 1 2006
# of cases Active After period	418	- 418 cases active on April 1
Avg days to admission, all adms	55	- the 156 cases admitted in the quarter waited an average of 55 days
Min days to admission, all adms	0	
Max days to admission, all adms	887	
Avg stay, discharged cases	183	- the 35 cases discharged in the quarter were in service an average of 183 days
Min stay, discharged cases	0	
Max stay, discharged cases	763	
Avg wait, WL cases	197	- the 55 cases waiting as of April 1 have been waiting an average of 197 days
Min wait, WL cases	1	
Max wait, WL cases	605	
Avg stay, continuing cases	328	- 418 cases continuing in treatment as of April 1 have been in service an average of 328 days
Min stay, continuing cases	3	
Max stay, continuing cases	1 184	
Avg days to non-materialize	255	-20 cases closed without being seen were 'on the books' an average of 255 days before closure
Min days to non-materialize	0	
Max days to non-materialize	929	

- **The ratio of Active: Waiting cases at Woodview has increased to $418 / 55 = \underline{7.6}$, as of April 1 2006. This is very high (good), and reflects a concerted effort by Woodview and Contact Brant to strategically triage cases into immediately available services.**
- **The ratio of Active: Waiting cases 12 months previously, as of March 31 2005, was $294 / 133 = \underline{2.2}$**
- **The ratio of Active: Waiting cases 24 months previously, as of March 31 2004, was $166 / 172 = 166/172 = \underline{0.96}$**

2 Effect size Table: Woodview Discharge Forms, Jan 1 2006 – March 31 2006

This section focuses on outcomes and satisfaction for cases discharged from Woodview during Q1 06.

	Average Scores		Effect Size	# of Pairs
	At Intake	At Discharge		
Attention	77.04	66.79	1.46	14
Cooperativeness	72.39	67.48	0.6	21
Conduct	95.58	66.01	1.46	12
Externalizing	77.65	68.21	0.99	18
Seperation	78.55	64.03	1.15	11
Anxiety	77.21	69.33	0.72	14
Mood	81.7	56.6	1.98	18
Internalizing	80.67	65.26	1.37	17
Total Mental Health	78.14	66.52	1.25	19
Child Functioning	76.8	61.46	1.17	19
Family Adjustment	81.72	70.53	0.61	17
Parent Mood	75.57	55.82	1.93	14
Family Functioning	67.61	62.17	4.24	2

- this is for all pairs of parent forms, where a discharge form was completed between Jan 1 2006 and March 31 2006.
- These were for Woodview cases only.
- There were 35 cases discharged from Woodview in this period (see sec. 1)
- There were 30 discharge BCFPI forms completed for this period.
- **This data thus constitutes an 86% sample of Brant-Woodview discharges for the period.**
- **This high completion rate should provide a valid measure of outcome and satisfaction, upon discharge, as reported by these parents.**

• For each problem area (attention, Cooperativeness, etc.) , the data pool is restricted to those whose Intake scores were => 65 for the problem area... i.e., What was the outcome for cases with significant intake symptomatology for a given problem, at point of discharge, for that problem?

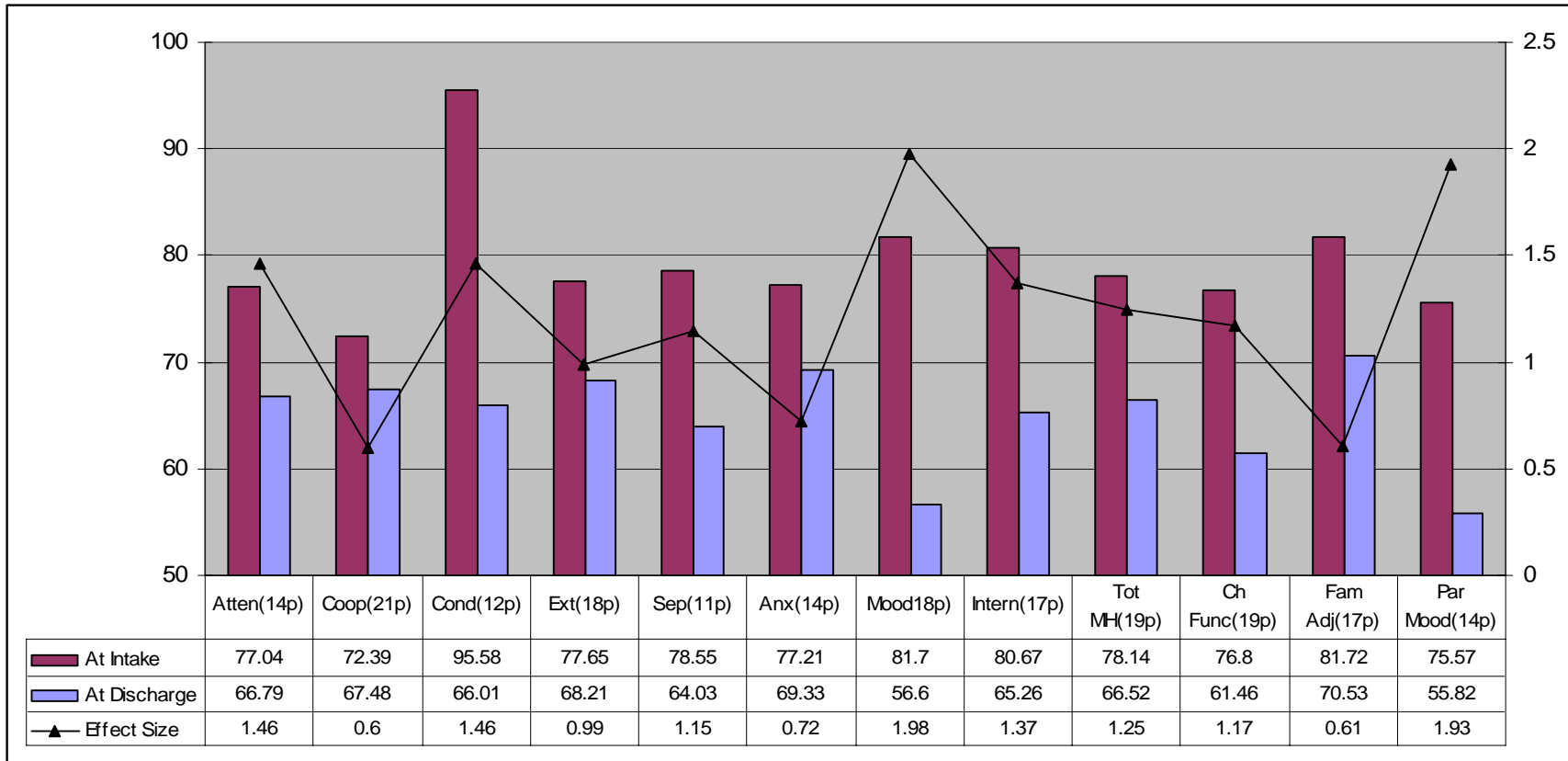
- The cases in this table are the 12 (Conduct) to 21 (Cooperativeness) cases out of these 30 discharge forms whose intake scores were => 65, i.e, 'borderline ' scores, as symptomatic as the most symptomatic 7% of a general population sample.
- Their average scores at intake were in the clinical range for all symptom groups, ranging between 95.58 (Conduct) to 72.39 (Cooperativeness)... scores, as symptomatic as the most symptomatic 2% of a general population sample.
- 12/13 average scores at discharge had dropped to the borderline range, ranging between 56.6 (Mood, ~ depression) to 69.33 (Anxiety).
 - Family adjustment, averaging 81.7 at Intake, dropped to 70.5, still just within the clinical range, => 70

Effect sizes characterizing these changes were **high** (=>0.8) for 9/12 areas, and moderate for the remaining 3 areas (=>0.6).

Only 2 cases had Intake scores => 65 for Family functioning (bottom row above). This sample is too small to draw conclusions re Fam Funct.

- These agency effect sizes are displayed graphically in the next section.

3 Effect size Graph: Woodview Discharge Forms, Jan 1 2006 – March 31 2006



- There were 35 cases discharged from Woodview in this period
- There were 30 discharge BCFPI forms completed for this period.
- This data thus constitutes an 86% sample of Brant-Woodview discharges for the period.
- E.g., there were 14 /30 cases whose Intake attention (RAIAp) scores were => 65 (Atten(14p), first data set, above). Their average intake score was 77.04. Their average RAIAp discharge score was 66.79. The Effect size (average before – average after)/ pooled standard deviation for this reduction in attention management difficulties was 1.46, which is a large Effect size.

4 Satisfaction: Woodview Discharges, Jan 1 2006 – March 31 2006

Item	1) Poor	2) Fair	3) Good	4) Very good	5) Excellent	G,VG or Exc.
Convenience	0%	3%	16%	39%	42%	97%
Time on wait List	0%	3%	23%	26%	48%	97%
Service time of day	0%	3%	19%	26%	52%	97%
Courtesy	0%	0%	7%	30%	63%	100%
Information re problems	0%	3%	7%	38%	52%	97%
Skills learned	0%	3%	17%	34%	45%	97%
Participation in decisions	3%	3%	20%	33%	40%	93%
Helpfulness	0%	0%	16%	32%	52%	100%
Overall	0%	3%	3%	32%	61%	97%

- There were 35 cases discharged from Woodview in this period
- There were 30 discharge BCFPI forms completed for this period.
- This data thus constitutes an 86% sample of Brant-Woodview discharges for the period.

Satisfaction with services is very high.

The remainder of this report focuses on Woodview program activities and outcomes

5 Program Referrals, Admissions and Discharges, Jan 1 2006 – March 31 2006

Program included in the remainder of this report are restricted to those with a referral in the quarter (Q1 06) or at least 1 case active at end of Q1 06

	Addiction Services	Brief Home Based	Brief Office Based	Clinical COPE	Parent ADD	Clinical Survival Kit	Clinical Temper Tamers
# of cases Waiting before period	2	5	20	48	4	4	9
# of cases Active before period	0	3	35	0	0	0	0
# of cases Referred In period	1	1	40	12	3	2	4
# of cases Admitted In period	0	5	51	10	0	0	0
# of cases Discharged In period	0	1	13	10	0	0	0
# cases Non-materialized In period	0	1	5	11	0	0	0
# of cases Waiting After period	3	0	4	39	7	6	13
# of cases Active After period	0	7	72	0	0	0	0
Avg days to admission, all adms		104	32	114			
Min days to admission, all adms		10	0	34			
Max days to admission, all adms		278	153	341			
Avg stay, discharged cases		81	139	33			
Min stay, discharged cases		81	23	17			
Max stay, discharged cases		81	346	49			
Avg wait, WL cases	254		5	206	101	279	247
Min wait, WL cases	19		1	24	15	31	25
Max wait, WL cases	394		9	513	177	491	687
Avg stay, continuing cases		98	94				
Min stay, continuing cases		32	9				
Max stay, continuing cases		229	452				
Avg days to non-materialize		63	136	123			
Min days to non-materialize		35	14	51			
Max days to non-materialize		91	355	390			
	Community COPE	Community Survival Kit	Community Temper Tamers	Day Treatment	Early Years	Intensive Home Based	Mobile Crisis
# of cases Waiting before period	13	1	4	0	2	36	69
# of cases Active before period	0	1	0	9	6	29	0
# of cases Referred In period	12	0	2	5	0	13	5
# of cases Admitted In period	1	0	0	5	0	19	0
# of cases Discharged In period	1	0	0	1	1	14	0
# cases Non-materialized In period	6	0	0	1	0	5	0
# of cases Waiting After period	18	1	6	0	2	26	74
# of cases Active After period	0	1	0	13	5	35	0
Avg days to admission, all adms	104	33		91	265	110	
Min days to admission, all adms	104	33		0	35	0	
Max days to admission, all adms	104	33		334	442	543	
Avg stay, discharged cases	17			144	259	190	
Min stay, discharged cases	17			144	259	0	
Max stay, discharged cases	17			144	259	473	
Avg wait, WL cases	135	432	176		308	218	369
Min wait, WL cases	1	432	38		278	36	19
Max wait, WL cases	506	432	388		338	387	886
Avg stay, continuing cases		166		294	191	146	
Min stay, continuing cases		166		17	123	3	
Max stay, continuing cases		166		915	344	569	
Avg days to non-materialize	142			167	578	254	
Min days to non-materialize	6			98	578	21	
Max days to non-materialize	346			235	578	725	

6 Program Referrals, Admissions and Discharges, Jan – Mar, Cont'd

	Office Assess & Treat	Other Community Programs	PASP	Residential Treatment	Respite Camp	Selective Mutism	Single Session
# of cases Waiting before period	31	212	29	5	7	0	0
# of cases Active before period	120	1	1	4	12	0	2
# of cases Referred In period	63	4	5	4	9	2	2
# of cases Admitted In period	68	1	0	2	4	2	2
# of cases Discharged In period	14	0	0	1	0	0	1
# cases Non-materialized In period	5	0	0	0	0	0	0
# of cases Waiting After period	21	215	34	7	12	0	0
# of cases Active After period	174	2	1	5	16	2	3
Avg days to admission, all adms	60	222	13	66	46	2	2
Min days to admission, all adms	0	10	13	0	0	0	0
Max days to admission, all adms	887	433	13	182	142	3	5
Avg stay, discharged cases	247			194			267
Min stay, discharged cases	6			194			267
Max stay, discharged cases	697			194			267
Avg wait, WL cases	155	579	313	225	159		
Min wait, WL cases	5	15	19	22	23		
Max wait, WL cases	409	975	535	848	411		
Avg stay, continuing cases	230	174	361	140	175	2	176
Min stay, continuing cases	3	58	361	68	9	2	18
Max stay, continuing cases	1 158	290	361	226	330	2	444
Avg days to non-materialize	348			229			272
Min days to non-materialize	28			229			272
Max days to non-materialize	735			229			272
	SNAP	TAPP-C	Wraparound Brant	Youth Anger Control Program	YRC-Long Term	Program Totals	
# of cases Waiting before period	35	7	3	5	0	551	
# of cases Active before period	1	0	4	0	0	228	
# of cases Referred In period	4	1	0	2	2	198	
# of cases Admitted In period	0	0	1	0	2	173	
# of cases Discharged In period	0	0	0	0	0	57	
# cases Non-materialized In period	0	0	0	0	0	34	
# of cases Waiting After period	39	8	2	7	0	544	
# of cases Active After period	1	0	5	0	2	344	
Avg days to admission, all adms	421		112		15	67	
Min days to admission, all adms	421		1		0	0	
Max days to admission, all adms	421		317		29	887	
Avg stay, discharged cases						162	
Min stay, discharged cases						0	
Max stay, discharged cases						697	
Avg wait, WL cases	339	369	211	177		389	
Min wait, WL cases	19	26	211	26		1	
Max wait, WL cases	716	724	211	260		975	
Avg stay, continuing cases	141		359		41	187	
Min stay, continuing cases	141		24		32	2	
Max stay, continuing cases	141		898		49	1 158	
Avg days to non-materialize						209	
Min days to non-materialize						6	
Max days to non-materialize						735	

Some cases were involved in more than 1 program, so the totals above refer to program enrolments, rather than cases.

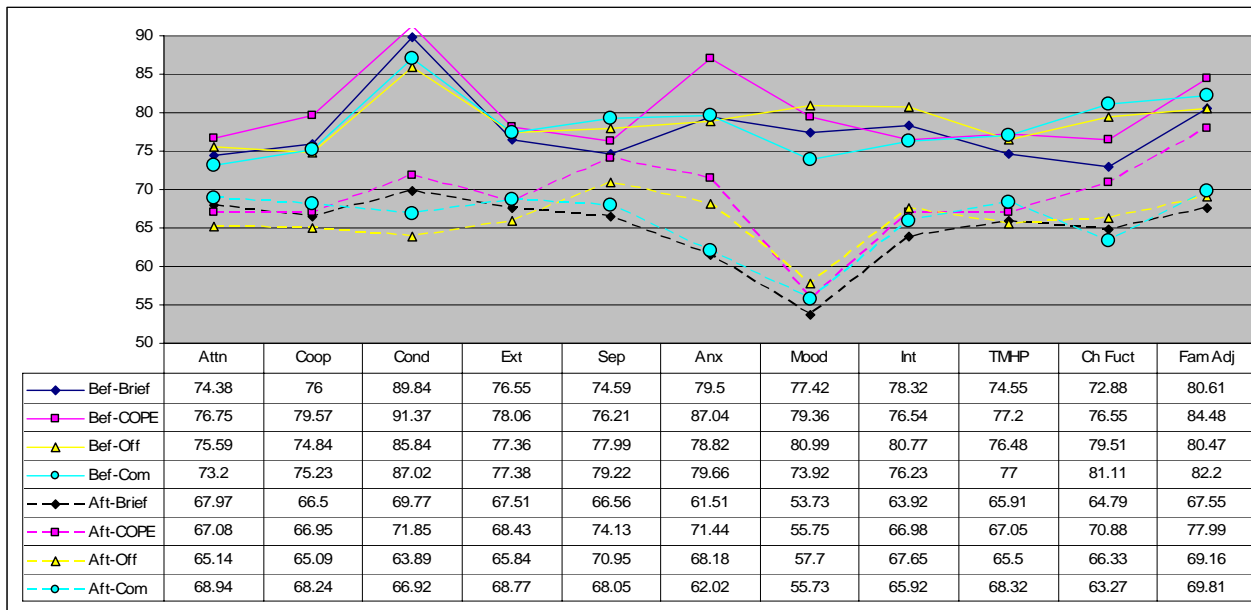
7 Effect Size: For Programs with at least 1 pre-post pair with 10+ pre scores =>65

Program		Average Scores				Program		Average Scores			
Brief Office Based	At Intake	At Discharge	Effect Size	# of Pairs	Clinical COPE	At Intake	At Discharge	Effect Size	# of Pairs		
Attention	74.38	67.97	0.99	25	Attention	76.75	67.08	1.08	10		
Cooperativeness	76	66.5	1.35	27	Cooperativeness	79.57	66.95	1.74	10		
Conduct	89.84	69.77	1.09	14	Conduct	91.37	71.85	0.86	10		
Externalizing	76.55	67.51	1.07	30	Externalizing	78.06	68.43	0.84	14		
Seperation	74.59	66.56	0.85	11	Seperation	76.21	74.13	0.31	4		
Anxiety	79.5	61.51	1.68	9	Anxiety	87.04	71.44	2.22	2		
Mood	77.42	53.73	2.15	19	Mood	79.36	55.75	1.82	10		
Internalizing	78.32	63.92	1.23	13	Internalizing	76.54	66.98	0.75	6		
Total Mental Health	74.55	65.91	0.92	25	Total Mental Health	77.2	67.05	0.89	12		
Child Functioning	72.88	64.79	0.68	23	Child Functioning	76.55	70.88	0.38	10		
Family Adjustment	80.61	67.55	0.7	23	Family Adjustment	84.48	77.99	0.27	11		
Parent Mood	74.1	54.44	2.02	14	Parent Mood	75.98	60.15	1.32	8		
Family Functioning	74.25	62.17	5.77	3	Family Functioning	0	0		0		
Program		Average Scores				Program		Average Scores			
Intensive Home Based	At Intake	At Discharge	Effect Size	# of Pairs	Office Assmt & Trtmt	At Intake	At Discharge	Effect Size	# of Pairs		
Attention	80.35	70.53	1.02	3	Attention	75.59	65.14	1.49	26		
Cooperativeness	71.09	66.88	0.53	8	Cooperativeness	74.84	65.09	1.12	33		
Conduct	101.51	64.82	1.76	7	Conduct	85.84	63.89	1.19	21		
Externalizing	75.03	62.55	1.13	8	Externalizing	77.36	65.84	1.35	32		
Seperation	79.52	66.77	0.98	7	Seperation	77.99	70.95	0.59	20		
Anxiety	74.51	81.96	-1.02	5	Anxiety	78.82	68.18	0.88	23		
Mood	83.19	60.57	2.03	8	Mood	80.99	57.7	1.96	34		
Internalizing	83.8	71.86	1.12	7	Internalizing	80.77	67.65	1.15	29		
Total Mental Health	78.79	67.38	1.92	8	Total Mental Health	76.48	65.5	1.02	38		
Child Functioning	77.2	65.23	0.9	10	Child Functioning	79.51	66.33	0.91	28		
Family Adjustment	83.11	75.21	0.38	6	Family Adjustment	80.47	69.16	0.73	27		
Parent Mood	75.02	58.3	1.53	5	Parent Mood	76.3	54.24	2.32	15		
Family Functioning	76.67	54.93		1	Family Functioning	67	57.34	1.85	3		
Program		Average Scores				Program		Average Scores			
Other Community Prgs	At Intake	At Discharge	Effect Size	# of Pairs							
Attention	73.2	68.94	0.55	12							
Cooperativeness	75.23	68.24	0.74	15							
Conduct	87.02	66.92	0.98	12							
Externalizing	77.38	68.77	0.97	14							
Seperation	79.22	68.05	0.86	7							
Anxiety	79.66	62.02	1.29	10							
Mood	73.92	55.73	1.55	12							
Internalizing	76.23	65.92	0.88	11							
Total Mental Health	77	68.32	0.92	14							
Child Functioning	81.11	63.27	1.1	9							
Family Adjustment	82.2	69.81	0.6	12							
Parent Mood	73.27	50.3	2.9	7							
Family Functioning	69.42	62.17		1							

- Secs. 7- 9 draw on all parent discharge forms to from Jan 1 2004 to March 31 2006.
- Most quarterly program discharge rates are too low to allow quarterly analysis of outcomes or satisfaction.
- It includes programs (5) where there are 10 or more pre-post pairs for at least 1 problem area.
- **Red bold** scores identify most severe symptom groupss, as severe as most symptomatic 2% of general population sample
- **Blue bold** scores show less severe symptoms, as severe as most symptomatic 7% of general population sample.
- **Green bold** scores show 'symptoms' in the normal range.
- **Grey rows** have fewer than 10 pairs, and are insufficient for evaluation.

The graph on the next sections (sec. 8) summarizes and compares the results for these cases and selected problem areas.

8 Program Before and After Averages for Pairs Whose 'Before' Score =>65: Graphical summary



Reminder: the pairs for each Program-Problem area are based on case whose before score => 65. e.g, for the COPE program, the preceding table (sec. 0 shows 10 pairs for COPE-Cooperativeness and 2 for Anxiety, suggesting the latter sample is too small to support analysis).

- This graph shows descriptively summarizes the pre-post differences amongst pairs whose pre-scores were => 65.
- It shows the consistent pre-post improvement tabulated in sec. 0
- Note that while all Pre scores were well into the clinical range (=>70), most Post scores, for all programs, were in the borderline

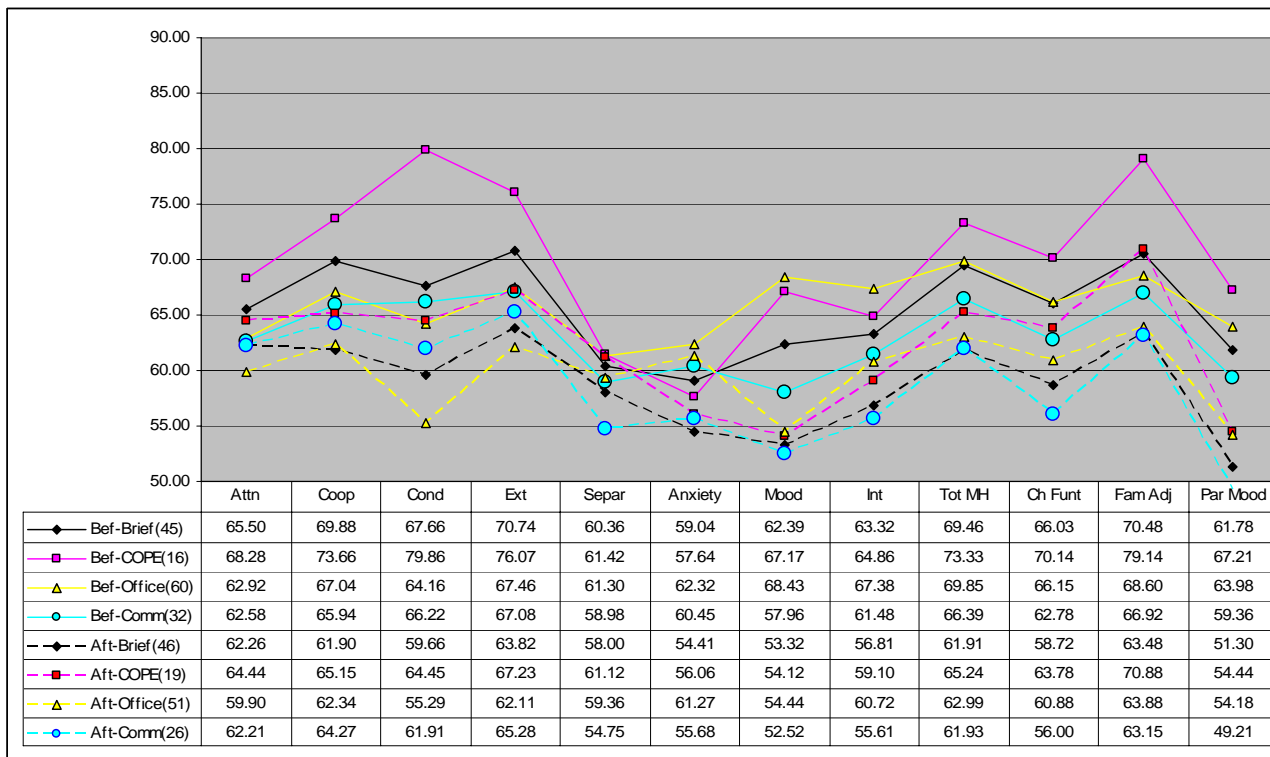
(65-70) range. Again, this is for cases with starting scores well into the clinical range, > 70.

The above graph focuses on pre scores for program cases whose scores were higher for each problem area, and it shows consistent and quite large reduction in symptomatology for all problems in those cases. The preceding table of this data (sec. 7) shows large (>0.8) Effect sizes for most problems in most programs.

9 Descriptive Comparisons of Pre-Post Scores for All Registrants to Programs

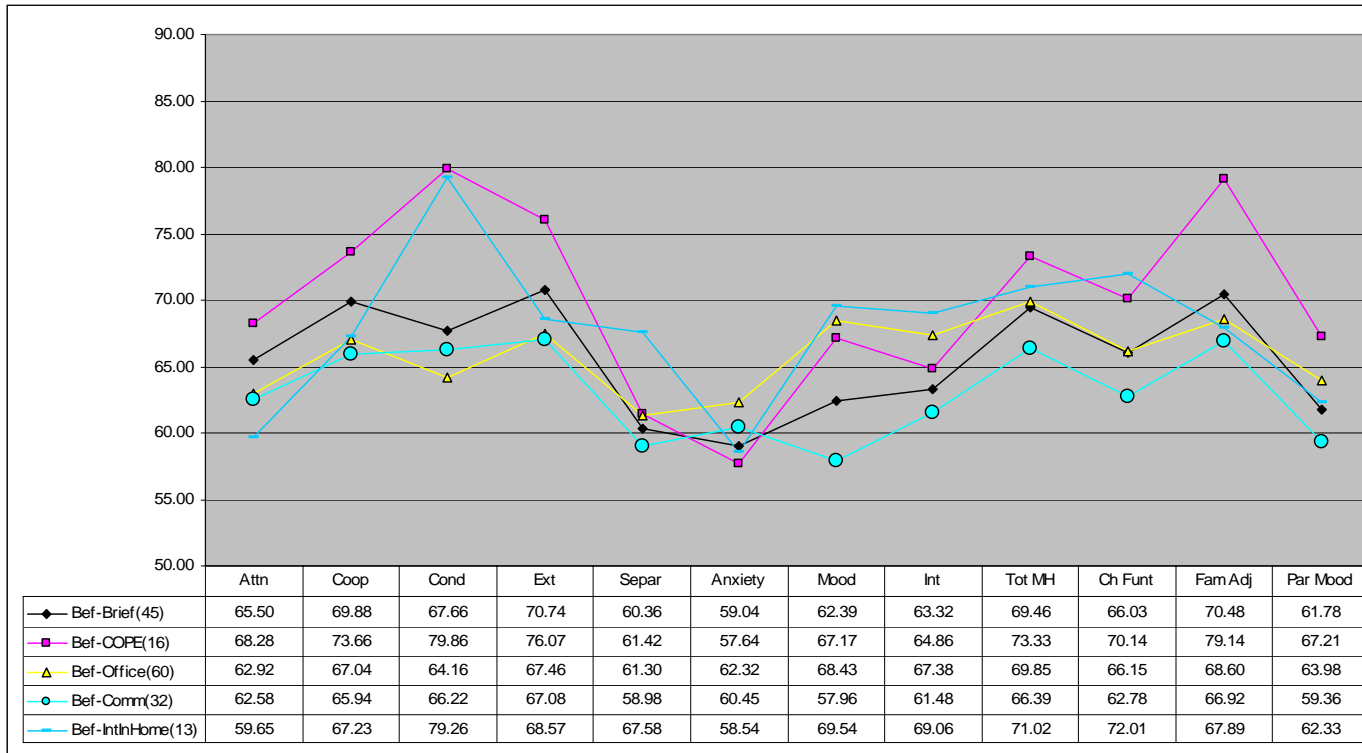
Section 9 examines programs considered in section 8; i.e., programs with cases having more than 1 problem area having more than 10 cases with Intake scores >70, and discharge scores for those same cases. However, it includes all cases with pre-post data for these programs, not just cases with pre-scores >65.

9.1 Pre-Post program Overview

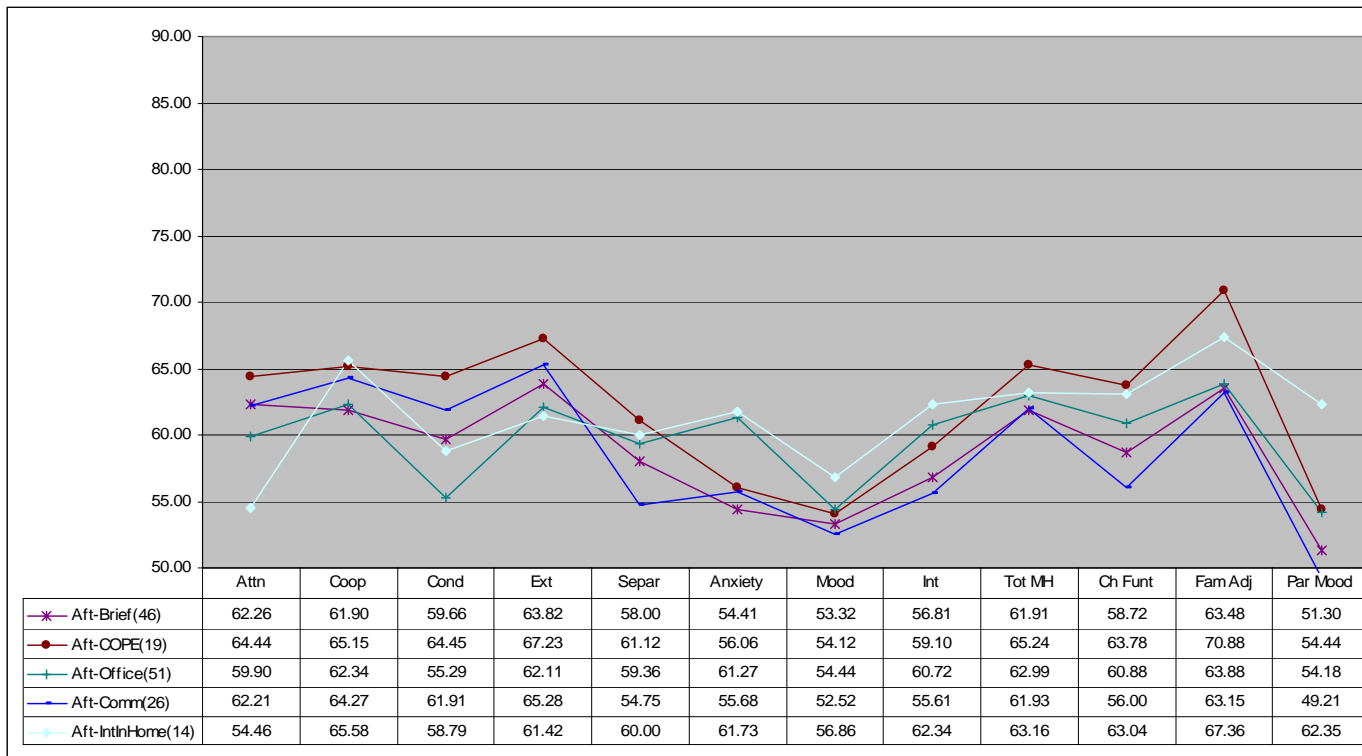


- When all cases are considered, it becomes more difficult to discern patterns, which were more apparent in sec. 8, where the focus was on cases with pre-scores =>65

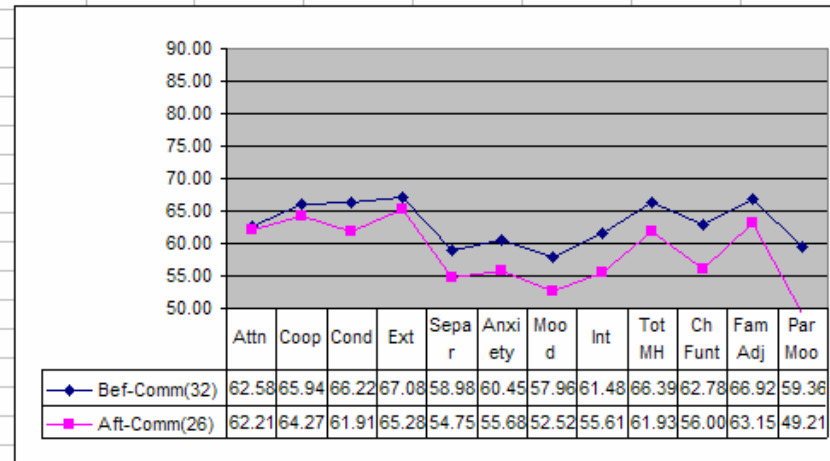
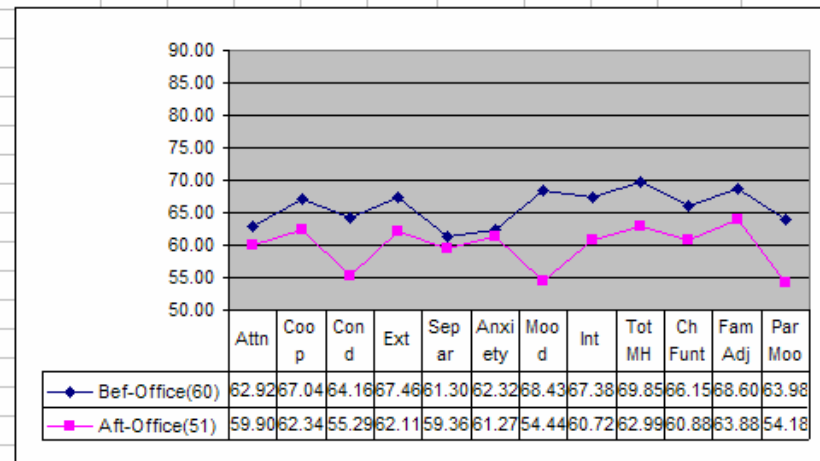
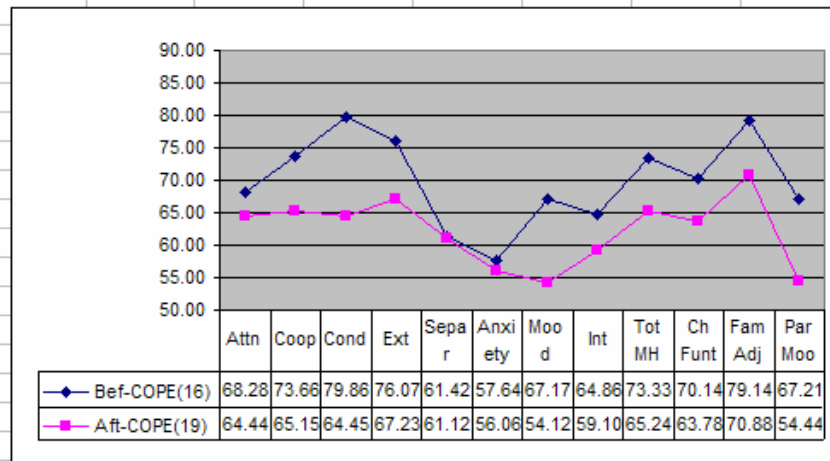
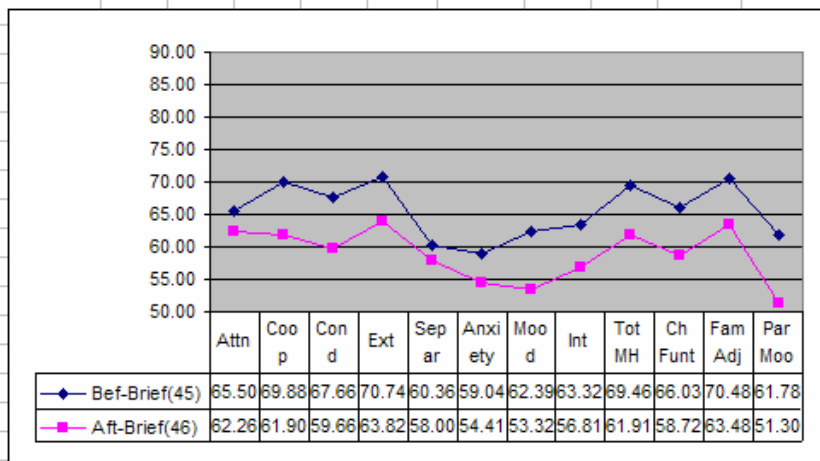
9.2 Comparison of Average Intake Scores Amongst All Referrals to Selected Programs Which Also Have Discharge Data.



9.3 Comparison of Post Scores Amongst Program Referrals



9.4 Pre-Post: 1 graph for Brief, COPE, Office and Community Programs



9.5 Pre-Post: Intensive Home-Based

